

REVIVE NX LTD

UK & Republic of Ireland Division

CHAMEDITECH

Portfolio Brochure

for the Cha Meditech Regenerative Aesthetics Portfolio
Advanced Korean Biotech Applied Through a Five-Step Regenerative System



TABLE OF CONTENTS

02	About Us
04	Cha Bio Group
06	From Products To Protocol
08	Nidogen-1 Technology
10	Step 1: Repair Reset The Canvas
12	Step 2: Rebuild Restore Volume & Structure
14	Step 3: Refine Sculpt With Hybrid Dermal Fillers
16	Hyafilia Dermal Filler Range
24	Step 4: Rehydrate Lock In Deep Hydration
27	Step 5: Radiate Daily Growth Factor Intelligence
29	Daily Regenerative Support Products
32	Regenerative Hair & Scalp Science
36	Training & Education
37	Copyright & Intellectual Property Notice



REVIVE NX LTD

ABOUT US

Revive NX Ltd is the official **UK & Republic of Ireland division and exclusive distributor** for the Cha Meditech regenerative aesthetics portfolio.

We are a science-led organisation focused on the structured integration of advanced Korean biotechnology into professional aesthetic practice.

Our work centres on regenerative aesthetics, with an emphasis on biological repair, cellular communication, and evidence-based skin renewal delivered through clinically intelligent systems.

Revive NX Ltd is responsible for the professional representation, distribution, and protocol-led integration of the Cha Meditech portfolio across the UK and Republic of Ireland. We support practitioners, clinics, and training centres through education, structured treatment frameworks, and clear clinical pathways that promote consistency, predictability, and long-term skin health.

All activity undertaken by Revive NX Ltd operates within professional aesthetics. We work in partnership with qualified practitioners and regulated clinical environments to ensure regenerative technologies are applied responsibly, effectively, and in alignment with high professional standards.

Our role is to support the continued advancement of regenerative aesthetics through science, structure, and education, contributing to the evolution of professional practice across the UK and Republic of Ireland.



Nita McEvoy

CHIEF EXECUTIVE OFFICER
REVIVE NX LTD | UK & IRELAND

I founded Revive NX Ltd with a clear vision to introduce structured, science-led regenerative systems into cosmetic aesthetic practice in a way that is both clinically responsible and commercially sustainable. My focus has always been on building long-term structural support within the skin, combining innovation with precision so that results are natural, refined and truly lasting.

The 5-Step Revive Rejuvenation Roadmap was developed to give practitioners a clear, global framework for regenerative integration. Rather than relying solely on volume, this structured approach ensures that dermal fillers, collagen stimulators, and advanced biotechnology work in harmony. Dermal fillers absolutely have their place within modern aesthetics, and when used within a regenerative framework, they go further, require less product over time and deliver beautifully undetectable outcomes.

In building these protocols, we have collaborated with elite injectors, respected professors of aesthetics and global biotechnology partners to ensure our systems are clinically grounded, practical and future-facing. Our work with international research and development teams enables us to bring innovation to the UK and Ireland in a responsible, measurable, and accessible way for practitioners at every stage of their growth.

Alongside clinical education, my commitment is to help practitioners build thriving, confident and sustainable businesses. Outstanding outcomes and strong commercial foundations should never be separated. When structure, science and strategy come together, clinics not only achieve exceptional results, they build reputations that endure.

Through national roadshows, advanced training programmes and international dialogue, including leadership platforms at IMCAS Paris, my aim is to ensure that regenerative aesthetics is a structured evolution of the industry.

Revive NX Ltd exists to support practitioners who want to combine integrity, innovation and long-term thinking in everything they do.

CHA BIO GROUP

Pharmaceutical Heritage.
Global Scientific Infrastructure.

Cha Bio Group is one of South Korea's oldest and largest pharmaceutical and biotechnology groups, with a legacy spanning over six decades of medical research, pharmaceutical development, and global supply.

Operating at the forefront of cell science, gene research, and regenerative medicine, Cha Bio Group plays a foundational role in the global pharmaceutical ecosystem. The group is a major supplier of raw pharmaceutical ingredients to international markets, supporting medical manufacturing, clinical research, and advanced therapeutic development worldwide.

Cha Bio Group encompasses an integrated global infrastructure that includes medical centres, research institutes, pharmaceutical manufacturing, and international medical education institutes. This vertically integrated model enables Cha Bio Group to translate scientific discoveries directly into clinical and commercial applications while maintaining exceptional standards across research, development, and production.

With a strong emphasis on regenerative medicine and advanced therapeutics, Cha Bio Group continues to shape the future of medical science through sustained investment in research, education, and pharmaceutical innovation on a global scale.



CHAMEDITECH

Regenerative Aesthetics, Developed at the Pharmaceutical Level.

Cha Meditech is the regenerative aesthetics and medical device arm of Cha Bio Group, translating pharmaceutical and biotech research into advanced regenerative technologies for aesthetics.

Based in South Korea, Cha Meditech specialises in the development and manufacture of bio-materials, medical devices, and regenerative aesthetic solutions, including advanced hyaluronic acid technologies and biostimulatory systems. Leveraging Cha Bio Group's proprietary Bio Material Conjugation Platform (BMCP), Cha Meditech applies pharmaceutical-grade science to the design of aesthetic products intended for professional clinical use.

Cha Meditech's approach centres on tissue behaviour, biological integration, and predictable clinical performance. Products are developed within a medical research environment, manufactured to rigorous quality standards, and designed to integrate seamlessly into structured regenerative protocols.

Through its close alignment with Cha Bio Group's pharmaceutical research and global infrastructure, Cha Meditech delivers regenerative aesthetic solutions that reflect medical-level precision, safety, and scientific integrity.



From Products to Protocols

Skin ageing is a cumulative, multi-layered process that simultaneously affects the epidermis, dermis, extracellular matrix, vascular function, and cellular communication. Effective rejuvenation depends on understanding how these layers interact and how biological decline progresses over time.

When treatments are applied without structural alignment, outcomes vary. Inconsistent sequencing and mismatched timing reduce predictability, longevity, and overall treatment coherence, even when advanced technologies are used.

Regeneration follows biological principles. Skin repair and renewal require proper sequencing, appropriate timing, and the establishment of optimal biological conditions that enable cellular activity and tissue responses to function effectively. Each stage of regeneration prepares the skin for the next, creating progressive improvement rather than isolated correction.

The Revive Rejuvenation™ Five-Step Regenerative System applies these principles through a structured clinical framework, guiding practitioners through a logical sequence of repair, rebuilding, refinement, rehydration, and maintenance to support consistent outcomes and long-term skin health.

THE REVIVE REJUVENATION™ *Protocol*

The Five-Step Regenerative Journey

The Revive Rejuvenation™ Protocol is a structured Five-Step Regenerative System developed by Revive NX Ltd to support the clinical application of the Cha Meditech regenerative aesthetics portfolio across the UK and Republic of Ireland.

The system is designed to align treatment selection with biological readiness, guiding practitioners through a logical regenerative sequence that supports skin repair, rebuilding, refinement, rehydration, and long-term maintenance.

The five steps of the Revive Rejuvenation™ Protocol are:

Repair - restoring skin stability and cellular communication

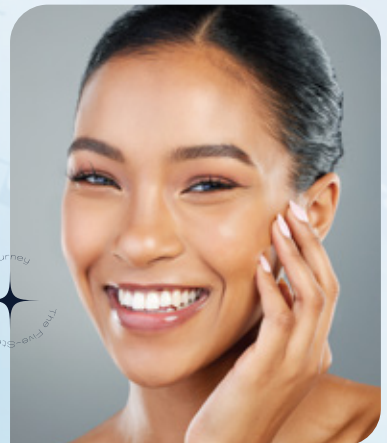
Rebuild - supporting dermal structure and biological strength

Refine - sculpting and contouring with tissue-respectful precision

Rehydrate - restoring deep hydration and skin resilience

Radiate - maintaining results through daily regenerative support

The Revive Rejuvenation™ Protocol provides a structured framework for consistent, predictable outcomes and forms the foundation for protocol-led education and treatment integration within professional aesthetic practice.



Trademark notice

The Revive Rejuvenation™ Protocol is a trademarked clinical framework developed by Revive NX Ltd.

THE REVIVE REJUVENATION™ Roadmap

Five Steps. One Regenerative Journey.

The Revive Rejuvenation™ Roadmap illustrates the functional flow of the Five-Step Regenerative System, defining the biological objective of each stage and the core regenerative technologies applied throughout the journey.

Each step prepares the skin for the next, establishing the correct biological conditions for progressive repair, restoration, optimisation, and long-term maintenance.

1

STEP 1 – REPAIR

Biological Focus

Skin stabilisation, inflammation regulation, restoration of cellular communication, and barrier recovery.

Key Regenerative Technologies

Celltermi Exosome Technology and regenerative skin recovery systems.

Functional Outcome

The skin environment is calmed, receptive, and biologically prepared for regeneration.

2

STEP 2 – REBUILD

Biological Focus

Stimulation of fibroblast activity, support of collagen and elastin synthesis, restoration of dermal density, and reinforcement of internal structure.

Key Regenerative Technologies

Celltermi PCL collagen stimulation and dermal rebuilding technologies.

Functional Outcome

Dermal strength, resilience, and foundational support are re-established.

3

STEP 3 – REFINE

Biological Focus

Tissue integration, contour support, structural harmony, and controlled volumisation aligned with natural anatomy.

Key Regenerative Technologies

Hyafililia hybrid dermal filler technology.

Functional Outcome

Facial structure and form are refined with precision and balance.

4

STEP 4 – REHYDRATE

Biological Focus

Optimisation of water-binding capacity, tissue hydration, elasticity, and preservation of regenerative gains.

Key Regenerative Technologies

Dorothy Dewy Advanced hydro-lifting and skin hydration systems.

Functional Outcome

Skin suppleness, resilience, and long-term hydration are maintained.

5

STEP 5 – RADIATE

Biological Focus

Ongoing cellular renewal, reinforcement of the skin barrier, daily regenerative signalling, and maintenance of clinical outcomes.

Key Regenerative Technologies

Growth factor-based on intelligent skincare and peptide delivery systems.

Functional Outcome

Skin health, luminosity, and regenerative performance are sustained over time.

Portfolio Navigation Statement: From this point forward, the Cha Meditech regenerative aesthetics portfolio is presented in alignment with the Revive Rejuvenation™ Roadmap. Individual products and modalities are introduced within their corresponding step, based on biological intent and structured clinical application.

NIDOGEN-1 TECHNOLOGY

Patented Regenerative Intelligence

Nidogen-1 is a critical structural protein within the basement membrane and plays a central role in maintaining skin integrity, organisation, and regenerative function. Often described as the molecular glue of the skin, Nidogen-1 acts as a key binding component that connects and stabilises essential structural proteins within the dermal-epidermal junction (DEJ).

At a molecular level, Nidogen-1 binds **Laminin, Collagen V, and Perlecan**, forming a cohesive structural network that anchors the epidermis to the dermis. This interaction strengthens the basement membrane, supports cell adhesion, and optimises the biological environment required for effective collagen synthesis and tissue regeneration.

The basement membrane functions as the command centre for cellular communication, migration, and repair. When this structure is robust and well supported, fibroblast activity, collagen production, and tissue renewal processes operate more efficiently, resulting in stronger, more resilient skin with improved regenerative capacity.

NIDOGEN-1 AND REGENERATIVE PERFORMANCE

Advanced regenerative outcomes rely on the integrity of the basement membrane. By reinforcing this foundational layer, Nidogen-1 contributes to:

Enhanced cell adhesion and organisation

Improved signalling between epidermal and dermal layers

Optimised collagen synthesis and extracellular matrix stability

Greater tissue resilience and regenerative efficiency

These mechanisms are fundamental to predictable skin repair, long-term structural integrity, and effective recovery following aesthetic and regenerative procedures.

CLINICAL RELEVANCE IN MODERN AESTHETIC PRACTICE

As demand for advanced aesthetic interventions and facial surgery continues to rise globally, the importance of skin preparedness and recovery capacity has become increasingly recognised.

A strengthened basement membrane plays a vital role in:

Supporting basement membrane health before, during, and after procedures creates optimal biological conditions for both treatment success and recovery.

Coordinated wound healing and tissue repair

Improved recovery quality following surgical and non-surgical procedures

Reduced tissue stress during regenerative interventions

Long-term stability of structural and aesthetic outcomes

NIDOGEN-1 WITHIN THE REGENERATIVE SYSTEM

The ChaMeditech regenerative aesthetics portfolio, represented in the UK and Republic of Ireland by **Revive NX Ltd**, incorporates a **patented formulation utilising Nidogen-1 technology** across key regenerative solutions.

This technology is most relevant during the **Repair** and **Rebuild** phases of the Revive Rejuvenation™ Five-Step Regenerative System, where establishing structural integrity, cellular organisation, and biological readiness is essential. Its benefits continue to support tissue performance and resilience throughout subsequent stages of the regenerative journey.

Nidogen-1 technology reflects a regenerative approach that operates at the level of skin architecture, reinforcing the basement membrane to support advanced clinical outcomes through biological structure, integration, and intelligent formulation.

STEP 1: REPAIR | Reset the Canvas

The Repair phase establishes the biological foundation for the entire regenerative journey. This step focuses on restoring skin stability, regulating inflammation, and re-establishing effective cellular communication to prepare the tissue for regeneration.

At the core of this process is the skin's microbiome, the community of beneficial, commensal bacteria that naturally live on the skin and scalp. These microorganisms play a central role in maintaining balance, supporting barrier function, regulating inflammation, and enabling healthy repair processes.

When the microbiome environment is supported, the skin functions efficiently. Healing responses are coordinated, inflammation is controlled, and aesthetic treatments perform more predictably. When this environment becomes disrupted through ageing, stress, aggressive treatments, antibiotics, or procedures, the skin becomes reactive, slower to repair, and increasingly difficult to treat.

Biological Focus

- 1 Microbiome balance and skin environment stabilisation
- 2 Regulation of inflammatory response
- 3 Restoration of cellular communication pathways
- 4 Barrier repair and tissue preparedness

This phase strengthens the basement membrane and restores early regenerative signalling, preparing the skin for effective rebuilding and refinement.



REGENERATIVE TECHNOLOGIES APPLIED

Celltermi NX Exosome Technology

Celltermi NX utilises **bacterially derived exosomes sourced from Lactobacillus paracasei**, a well-studied commensal bacterium recognised for its role in calming inflammation, strengthening the skin barrier, and supporting tissue resilience.

These microbiome-based exosomes act as intelligent biological messengers. Rather than forcing a reaction, they guide the skin and scalp toward balanced communication, supporting repair, protection, and regeneration in a way the body naturally recognises.

Each application delivers **approximately 150 billion high-quality exosomes**, ensuring both potency and consistency. The formulation is developed to meet stringent safety and quality standards and is **UK and EU compliant, with CPNP registration**, supporting its use within professional clinical practice.

Clinical Modality

Celltermi NX Exosomes are applied in conjunction with microneedling procedures, supporting targeted delivery and enhanced regenerative response within structured treatment protocols.



Celltermi Regenerative Sheet Mask

The Celltermi Sheet Mask complements the Repair phase by supporting barrier recovery, hydration, and post-procedure skin comfort. Its formulation reinforces skin stability following regenerative treatments and supports ongoing microbiome-friendly care.

Clinical & Homecare Application

The Celltermi Sheet Mask may be used:

- Immediately **after microneedling treatments** to support recovery and skin comfort
- As part of a **structured homecare regimen** to maintain barrier integrity and skin balance



Functional Outcome

Following the Repair phase, the skin environment is calmer, more stable, and biologically receptive. Inflammation is regulated, cellular communication is supported, and barrier function is reinforced, creating optimal conditions for the regenerative processes introduced in subsequent steps.

STEP 2: REBUILD | Restore Volume & Structure

The Rebuild phase focuses on restoring dermal strength, density, and internal support by stimulating the skin's own regenerative capacity. This step addresses the gradual loss of collagen, elastin, and fibroblast activity that underpins volume depletion and structural weakening over time.

By supporting biological rebuilding at the dermal level, this phase enhances skin integrity, resilience, and tensile strength, forming the foundation for refined contouring and long-term regenerative outcomes.

Biological Focus

- 1 Activation of fibroblast activity
- 2 Stimulation of collagen and elastin synthesis
- 3 Restoration of dermal density and strength
- 4 Structural support of the extracellular matrix

This phase rebuilds the skin's internal architecture, improving its ability to support both regenerative and aesthetic interventions.



REGENERATIVE TECHNOLOGIES APPLIED

Celltermi PCL Collagen Stimulator

Celltermi PCL is designed to support long-term collagen stimulation and dermal rebuilding. Through controlled biostimulatory action, it promotes fibroblast activation and encourages gradual collagen production, contributing to improved skin structure, firmness, and resilience.

Celltermi PCL is incorporated into structured rebuilding protocols that support progressive regeneration rather than immediate correction, aligning with the biological intent of the Rebuild phase.

Rebuilding Mesotherapy Solutions

Complementary rebuilding solutions may be integrated to support cellular activity, tissue nutrition, and dermal recovery during this phase. These solutions enhance the regenerative environment and work synergistically with collagen stimulation to reinforce structural outcomes.



Clinical Application

Rebuilding technologies in this phase are incorporated through practitioner-led protocols, commonly utilising microneedling and mesotherapy. Some practitioners may also integrate rebuilding solutions via cannula delivery, where this sits within their professional training, scope of practice, and clinical judgement.

Delivery method selection remains practitioner-led, ensuring responsible application within regulated aesthetic environments.



Functional Outcome

Following the Rebuild phase, dermal structure is strengthened, collagen activity is supported, and the skin demonstrates improved density and resilience. This enhanced internal support prepares the tissue for precise refinement and contouring in subsequent stages of the regenerative journey.

STEP 3: REFINE | Sculpt with Hybrid Dermal Fillers

The Refine phase focuses on restoring definition, contour, and structural balance once the skin has been stabilised and rebuilt. At this stage, refinement is carried out with **precision and control**, ensuring structural support integrates evenly within the dermal matrix and contributes to balanced, natural-looking outcomes.

This phase prioritises predictable tissue behaviour and long-term stability, allowing contouring to enhance facial architecture while maintaining smooth movement, coherence, and uniform integration within the skin.

Biological Focus

- 1 Structural support and contour refinement
- 2 Controlled volumisation with uniform dermal integration
- 3 Even distribution within the dermal matrix
- 4 Smooth, predictable degradation over time

This phase refines form while supporting stability, hydration, and long-term skin quality.



HYAFILIA® SMV

REGENERATIVE TECHNOLOGIES APPLIED

Hyafilia Hybrid Dermal Filler Technology

Hyafilia is a **biphasic hyaluronic acid dermal filler** developed using **CHA-HEART technology**

(High-concentration Emulsion Arrangement & Rheology Reaction Technology).

This advanced biotechnology enables Hyafilia to deliver the **performance characteristics of monophasic fillers** while retaining a **biphasic gel structure**. Through controlled chemical and physical crosslinking, CHA-HEART technology creates a highly concentrated HA gel with a high gel-to-fluid ratio, delivering cohesion, elasticity, and smooth handling.

The gel's refined quality results in a **low injection force**, enabling practitioners to work with greater **precision and control** during placement. This supports accurate delivery, smoother injection, and consistent tissue integration, contributing to more predictable outcomes.

Importantly, the technology achieves structural strength and longevity with a **lower requirement for BDDE**, supporting a refined crosslinking profile and contributing to **even, smooth degradation** within the tissue.

Hyafilia is **CE** marked for professional aesthetic use.



Performance Characteristics Enabled by CHA-HEART Technology

Hyafilia demonstrates a **balanced, high-performance profile, including:**

Low injection force, supporting precision and operator control

High cohesion, maintaining shape stability and reducing migration risk

Elasticity, allowing resistance to deformation while preserving flexibility

Controlled integration, supporting uniform dermal distribution

Smooth, even degradation, allowing results to evolve naturally over time

Hydrating and luminating effect, contributing to improved skin quality alongside structural refinement

This combination positions Hyafilia among the latest advancements in dermal filler biotechnology, delivering globally competitive performance through pharmaceutical-level development.

HYAFILIA[®]

DERMAL FILLER RANGE

The Hyafilia range is available in formulations with and without lidocaine, allowing practitioners to select the most appropriate option based on clinical preference and patient suitability.

NON-LIDOCAINE FORMULATIONS

HYAFILIA[®] S

HYAFILIA[®] M

HYAFILIA[®] V

NON-LIDOCAINE FORMULATIONS

HyaFilia S
Plus



HyaFilia M
Plus



HyaFilia V
Plus



Each formulation is engineered to deliver precision handling, stable tissue integration, and even, smooth degradation, supporting refined outcomes while enhancing hydration and luminosity of the skin.

Clinical Application

HyaFilia hybrid dermal fillers in this phase are applied using practitioner-led techniques selected based on anatomical indication, treatment objective, and professional scope of practice. The refined handling characteristics support controlled delivery and consistent outcomes, contributing to a calm, measured injection experience and predictable tissue response.



Functional Outcome

Following the Refine phase, facial contours appear balanced, supported, and harmonious. Structural definition is enhanced with precision, tissue integration remains uniform, and results demonstrate smooth degradation, accompanied by visible improvements in skin hydration and luminosity.



HYAFILIA® *S*

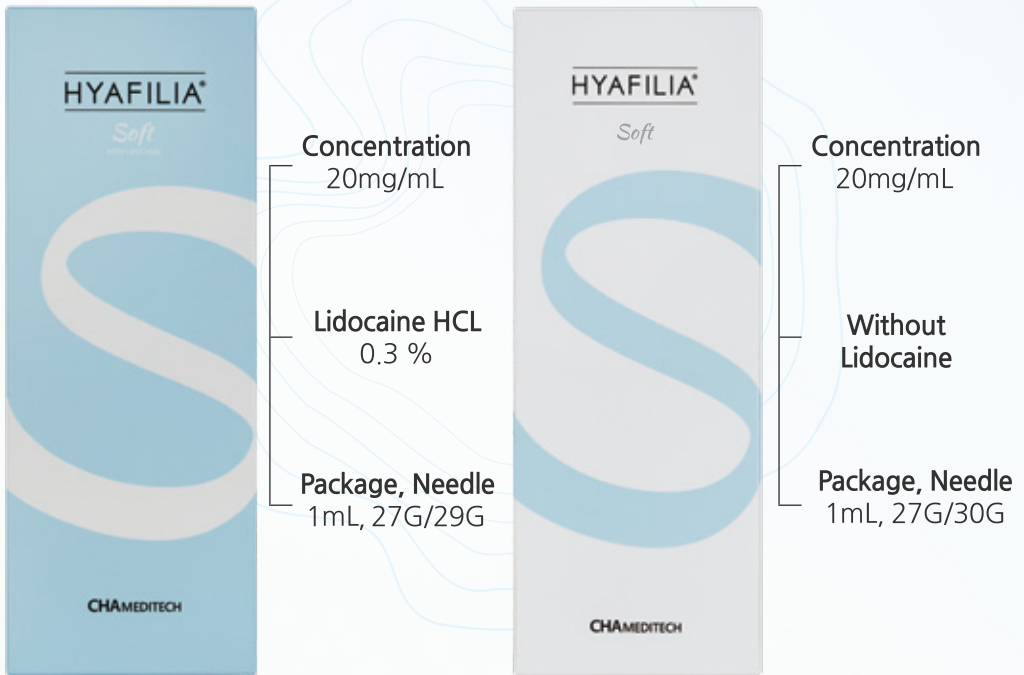
HYAFILIA® *M*

HYAFILIA® *V*

HYAFILIA® Soft

HYAFILIA® **S** is a smooth, cross-linked hyaluronic acid dermal filler designed for augmentation of shallow wrinkles and moderate skin defects. It provides balanced tissue restoration with a smooth surface profile and uniform dermal integration.

Hyafilia® S is primarily dedicated to correcting concerns such as fine lines and wrinkles around the mouth and eyes, supporting refined contour correction with consistent and even tissue distribution.



Soft ●●○○



HYAFILIA®
Soft

Crow's Feet

Superficial Wrinkles

Perioral Wrinkles

HYAFILIA® *Mold*

HYAFILIA® *M* is an elastic, cross-linked hyaluronic acid dermal filler designed to enhance soft tissue volume and correct medium-depth wrinkles. Its formulation supports balanced volumisation and effective structural performance within the dermis.

Hyafilia® M is primarily indicated for cheek volume enhancement, nose augmentation, soft contour sculpting, marionette lines, and nasolabial folds, providing controlled support and smooth integration for predictable contour correction.

Product Variant	Concentration	Lidocaine HCL	Package, Needle
HYAFILIA® <i>Mold</i> (With Lidocaine)	20mg/mL	0.3 %	1mL, 27G/29G
HYAFILIA® <i>Mold</i> (Without Lidocaine)	20mg/mL	Without Lidocaine	1mL, 27G/30G

Mold ●●●○



Nose

Nasolabial Folds

Marionette Lines

HYAFILIA® Volume

HYAFILIA® V is an ultra-elastic, cross-linked hyaluronic acid dermal filler dedicated to restoring or increasing the volume of soft tissues and correcting deep wrinkles and skin grooves. It is optimised for facial sculpting and contour modelling, delivering strong structural support and projection where more profound volume correction is required.

Hyafilia® V is particularly suited to facial sculpting and structural contouring in areas such as the mid-face, jawline, chin, and cheekbones, providing strong volume support with balanced integration and predictable performance over the medium and long term.

Product Variant	Concentration	Lidocaine HCL	Package, Needle
HYAFILIA® Volume WITH LIDOCAINE	20mg/mL	0.3 %	1mL, 27G/29G
HYAFILIA® Volume	20mg/mL	Without Lidocaine	1mL, 25G/27G

Volume ●●●●



HYAFILIA®
Volume

Cheekbones

Jaw, Jawline

Chin

STEP 4: REHYDRATE | Lock In Deep Hydration

The Rehydrate phase focuses on improving hydration, elasticity, and surface resilience while supporting skin firmness and refinement. This step plays a key role in maintaining regenerative gains and enhancing overall skin quality following structural rebuilding.

Hydration at this stage is functional, not superficial. By supporting water retention within the dermis and improving tissue flexibility, the skin appears smoother, more resilient, and visibly refreshed.

Biological Focus

- 1 Deep dermal hydration
- 2 Light structural support and tissue-lifting effect
- 3 Improvement of skin texture and elasticity
- 4 Maintenance of regenerative and structural outcomes

This phase supports skin quality, comfort, and longevity of results across the regenerative journey.

DOROTHY 
CE MARKED




REGENERATIVE TECHNOLOGIES APPLIED

Dorothy Dewy Hydro Lifting Skin Booster

Dorothy Dewy is a lightly cross-linked hyaluronic acid skin booster, developed to deliver deep hydration while supporting skin firmness and a smoothing effect. Its refined structure supports long-lasting hydration while maintaining flexibility and natural tissue movement.

The formulation provides an immediate hydrating and smoothing effect, helping to smooth fine lines, soften wrinkles, and improve skin irregularities. It is particularly effective for improving the appearance of lines, scars, and rolling scars, supporting a more even skin surface and refined texture.

Dorothy Dewy also supports skin density and hydration and is well-suited for use in conjunction with collagen-stimulation and biostimulatory treatment plans, enhancing results in a natural, refined way and improving glow, smoothness, and overall skin quality.



DOROTHY
Dewy

CHAMEDITECH

- Concentration
20mg/mL
- G' Elasticity
0.1 cP
- G'' Viscosity
1.5 cP
- Without Lidocaine
- Package, Needle
3mL * 3ea,
Needle is not included

Dewy ● ○ ○ ○ ○

Clinical Application

Dorothy Dewy is applied within the superficial dermal layer using advanced techniques such as micro-bolus placement, field pattern application, or linear retrograde approaches.

Where appropriate and within the practitioner's professional scope of practice, delivery may also be performed using cannula techniques. The treatment approach and delivery method are selected based on the treatment objective, the anatomical area, and individual clinical judgement.

Dorothy Dewy is CE marked for professional cosmetic aesthetic use.



Functional Outcome

Following the Rehydrate phase, the skin demonstrates improved hydration, elasticity, and surface smoothness. Fine lines and textural irregularities appear softened, tissue flexibility is enhanced, and overall skin quality shows a refreshed, luminous appearance.



Key Characteristics

Lightly cross-linked hyaluronic acid

Deep, long-lasting hydration

Subtle tissue lifting and smoothing effect

Improvement in skin texture and resilience

Suitable for targeted line and scar-focused treatments

Supports maintenance and enhancement of regenerative outcomes

STEP 5: RADIATE | Daily Growth Factor Intelligence

The Radiate phase focuses on sustaining regenerative outcomes through daily biological support. This step extends the benefits of in-clinic procedures by reinforcing skin function, strengthening the barrier, and supporting ongoing cellular renewal at home.

Rather than acting as cosmetic maintenance, this phase is designed to support daily regeneration, ensuring the skin continues to function optimally between and after professional treatments.

Biological Focus

- 1 Post-procedure skin support
- 2 Ongoing cellular renewal and communication
- 3 Barrier strengthening and resilience
- 4 Longevity and stability of regenerative outcomes

This phase plays a critical role in preserving treatment results while enhancing overall skin health and performance.



REGENERATIVE TECHNOLOGIES APPLIED

Revive Growth Factor Intelligent Skincare

Revive Growth Factor Intelligent Skincare is formulated to support daily regenerative signalling within the skin. By delivering biologically intelligent ingredients that complement in-clinic procedures, this range helps maintain skin balance, support recovery, and enhance long-term treatment outcomes.

Regular use supports barrier integrity, improves skin resilience, and enhances the longevity of results achieved through the earlier stages of the Revive Rejuvenation™ Five-Step Regenerative System.

Celltermi Peptosome GHK-Cu Peptide Range

The Celltermi Peptosome range utilises **GHK-Cu peptide technology** to support ongoing skin repair, regeneration, and barrier reinforcement. Encapsulated delivery enhances stability and bioavailability, allowing peptides to work effectively within daily skincare routines.

This range supports skin renewal, improves texture and tone, and contributes to visible radiance by strengthening the skin's natural repair mechanisms over time.

Daily Integration

Products within the Radiate phase are designed for **daily use** as part of a structured homecare regimen. Their role is to maintain biological momentum, support recovery following procedures, and reinforce the skin's ability to regenerate consistently.

Functional Outcome

With consistent use, the Radiate phase supports sustained skin health, improved resilience, and visible luminosity. Regenerative results are preserved, barrier function is strengthened, and the skin continues to perform at an optimal level long after clinical treatments are completed.

Key Characteristics

Supports post-procedure recovery

Reinforces barrier function and skin resilience

Promotes daily cellular regeneration

Enhances longevity of in-clinic results

Delivers visible radiance through biological support

DAILY REGENERATIVE SUPPORT PRODUCTS



Revive Repair Cream

Post-Procedure Recovery & Barrier Restoration

Revive Repair Cream is a restorative moisturiser developed to support skin recovery following aesthetic procedures and periods of sensitivity. Formulated with growth factor intelligent skincare technology, it supports cellular repair, barrier strengthening, and hydration during the critical post-procedure phase. Regular use helps calm the skin, improve comfort, and support a smooth, even appearance as the skin recovers.

Use: Morning and night. Particularly suited for use immediately after procedures and during recovery.



Revive MELA Cream

Pigment Balance & Skin Clarity

Revive MELA Cream is designed to support the correction of uneven pigmentation and improve overall skin clarity while maintaining hydration and barrier health. By combining brightening actives with intelligent growth factor skincare technology, it supports skin renewal, uniform tone, and long-term pigment stability. The result is clearer, brighter skin with improved texture and resilience.

Use: Morning and night. Daily use supports ongoing pigment balance and skin luminosity.



Celltermi Peptosome Repair Cream (GHK-Cu Peptide Technology)

Daily Regeneration & Barrier Strengthening

The Celltermi Peptosome Repair Cream delivers advanced **GHK-Cu peptide technology** via encapsulated delivery systems designed to support daily skin regeneration. GHK-Cu plays a critical role in collagen support, tissue repair, and barrier reinforcement, making it essential for maintaining skin resilience following procedures and throughout long-term skin management.

The formulation supports elasticity, hydration, and structural repair while remaining lightweight and comfortable on the skin. The Peptosome range features a **delicate, light, and pleasant scent**, making it ideal for daily use.

Use: Morning and night as part of a structured regenerative skincare routine.



Celltermi Peptosome Repair Essence Mist (GHK-Cu Peptide Technology)

Hydration, Protection & On-the-Go Regeneration

The Peptosome Repair Essence Mist provides immediate hydration and ongoing regenerative support throughout the day. Formulated with GHK-Cu peptides and barrier-supporting actives, it reinforces skin resilience, supports repair, and maintains hydration between skincare applications.

The fine mist format allows easy integration into daily routines and can be used **morning and night**, throughout the day, or as a **makeup-setting spray** to refresh and maintain skin comfort. The mist shares the same **light, pleasant scent** as the Peptosome cream, making it ideal for frequent use.





Why GHK-Cu Matters in Daily Skin Regeneration

GHK-Cu is a naturally occurring copper peptide involved in skin repair, collagen support, and barrier maintenance. Daily exposure to environmental stressors and aesthetic interventions increases the skin's demand for regenerative signalling. Incorporating GHK-Cu into daily skincare supports continuous repair processes, helping preserve treatment results, strengthen the barrier, and maintain healthy skin function over time.

REGENERATIVE HAIR & SCALP SCIENCE

Responding to the Global Shift in Hair Restoration

Hair restoration is evolving beyond isolated stimulation and surgical intervention. As hair transplantation continues to grow globally, there is increasing recognition that **long-term success depends on scalp biology, follicular environment, and tissue health**, not grafting alone.

Clinics are responding by integrating regenerative hair and scalp solutions that support inflammation control, cellular signalling, and tissue recovery. This shift reflects growing demand for **non-surgical regeneration**, preventative care, and biologically intelligent support before and after intervention.

The Biology Behind Hair & Scalp Health

Hair follicles function within a complex biological environment governed by cellular communication, inflammation balance, and tissue quality. When this environment is compromised, follicular signalling becomes disrupted, and hair growth becomes increasingly difficult to sustain.

Effective regenerative hair strategies focus on:

- 1 Restoring healthy cellular signalling
- 2 Calming chronic scalp inflammation
- 3 Supporting dermal papilla cell function
- 4 Optimising the follicular micro-environment

Addressing the environment first allows follicles to respond more effectively to regenerative and surgical interventions.

CELLTERMI HS

CELLTERMI HS HAIR & SCALP REGENERATION SYSTEM

Celltermi HS is an advanced scalp and hair regeneration system developed to support follicular health through a multi-pathway regenerative approach.

Rather than relying on a single active, Celltermi HS combines multiple probiotic-derived exosomes with PDRN, creating a formulation designed to restore scalp biology, support tissue recovery, and optimise conditions for hair growth and retention.



WHY EXOSOMES + PDRN WORK BETTER TOGETHER

Exosomes function as biological messengers, supporting cellular communication within the scalp. They help regulate inflammation, support cell survival, and restore signalling pathways critical to follicular activity.

PDRN supports tissue repair, regeneration, and micro-environment recovery. Within the scalp, it contributes to improved tissue resilience and recovery capacity, particularly in environments affected by inflammation, stress, or procedural trauma.

Together, this combination:

- Supports inflammation control and scalp calming
- Restores cellular communication efficiency
- Improves dermal papilla cell function
- Creates a healthier follicular environment for growth and retention

This layered regenerative strategy addresses both **immediate scalp health and long-term follicular support**.



CLINICAL INTEGRATION

Celltermi HS is designed for **microneedling-led delivery**, supporting effective penetration and targeted regenerative signalling within the scalp.

It is well-suited for:

- **Pre-hair transplant preparation**, supporting scalp readiness
- **Post-hair transplant recovery**, assisting tissue repair
- **Non-surgical regenerative scalp programmes**, optimising follicular conditions

The application remains practitioner-led and aligned with the professional scope and clinical judgement.

POSITIONING

Celltermi HS represents a dedicated regenerative hair and scalp system developed to support the evolving landscape of hair restoration. Its systems-based, biologically intelligent design focuses on restoring the scalp environment required for sustainable, long-term results.

Through this approach, Revive NX Ltd supports clinics as they expand into advanced hair and scalp services with regenerative solutions grounded in biology rather than short-term interventions.

Vial 1 : Lyophilized Powder



336 mg / vial

4 types of Exosomes



MD, Tremella, Centella, Kimchi Probiotic-Derived

Activation of dermal papilla cells and scalp soothing effects

Growth Factors



hGH/bFGF/VEGF/IGF-1

Regeneration and stimulation of dermal papilla cells

CHA-Nidogen-1



Strength of Core Structure

Key player in maintaining basement membrane

Vial 2 : Activating Solution



7 ml / vial

CHA-Nopecia



Peptidomimetic heptapeptide in dimeric form

Induction of dermal papilla cell proliferation

PDRN



Nucleic acid and sodium complex derived from DNA

Scalp soothing effect

Biotin Caffeine



Active ingredients for Hair Loss Care

Hair strengthening and extension of the hair follicle growth cycle

HA



Low molecular weight hyaluronic acid

Maintaining moist and hydrated scalp

CHA-SAC



Antioxidant compounds derived from garlic

Scalp soothing and antioxidative effects

TRAINING & EDUCATION

PROFESSIONAL TRAINING & PROTOCOL INTEGRATION

Education sits at the core of Revive NX Ltd's approach. The training framework is designed to support practitioners, clinics, and training centres in the structured integration of regenerative technologies into professional practice.

Rather than isolated product instruction, education is delivered through protocol-led systems, ensuring consistency, predictability, and clinical coherence across treatments.

Educational Focus

- Comprehensive product and protocol education
- Step-based training aligned to the **Revive Rejuvenation™ Five-Step Regenerative System**
- Biological understanding alongside practical application
- Structured integration of regenerative technologies into existing services

This approach ensures that products are used within clearly defined clinical frameworks rather than as standalone interventions.

Protocol-Led Training

Training delivered by Revive NX Ltd is aligned with the Revive Rejuvenation™ system, guiding practitioners through the logical sequencing of repair, rebuilding, refinement, hydration, and daily regenerative support.

By teaching how and when products are used within the system, education supports:

- More consistent outcomes
- Improved treatment planning
- Safer, more predictable application
- Long-term regenerative thinking

CLINIC & TRAINING CENTRE SUPPORT

Revive NX Ltd works alongside clinics and training centres to support the delivery of regenerative education across the UK and Republic of Ireland. Support extends beyond initial training, providing ongoing guidance for protocol implementation, service development, and clinical integration.

Education is positioned as a cornerstone of regenerative practice, ensuring that innovation is applied responsibly, confidently, and within structured professional frameworks.

Educational Philosophy

Regenerative aesthetics requires understanding, structure, and discipline. By placing education at the centre of its portfolio, Revive NX Ltd supports the evolution of professional practice through clarity, systemisation, and biological intelligence.

COPYRIGHT & INTELLECTUAL PROPERTY NOTICE

© REVIVE NX LTD. ALL RIGHTS RESERVED.

The **Revive Rejuvenation™** name, Five-Step Regenerative System, protocol structure, educational frameworks, and associated content are the intellectual property of Revive NX Ltd. The Revive Rejuvenation™ Protocol is a trademarked regenerative system developed for structured professional application.

All written content, diagrams, protocols, systems, and educational materials contained within this portfolio are protected by copyright and intellectual property law.

This portfolio and its contents are provided for professional and educational use only within approved clinical, training, and educational environments. Permission is granted for reference and learning purposes in connection with authorised Revive NX Ltd products, training, and protocols.

No part of this publication may be reproduced, copied, distributed, adapted, translated, or transmitted in any form or by any means, whether electronic, mechanical, digital, or otherwise, without the prior written consent of Revive NX Ltd.

Unauthorised use, reproduction, or distribution of this material, including the Revive Rejuvenation™ Protocol structure or associated educational frameworks, may result in legal action.



UK & Republic of Ireland Division

REVIVE NX LTD

UK & Republic of Ireland Division

CHAMEDITECH

Portfolio Brochure

for the ChaMeditech Regenerative Aesthetics Portfolio
Advanced Korean Biotech Applied Through a Five-Step Regenerative System

Nita McEvoy
Chief Executive Officer



hello@revivenx.co.uk



www.revivenx.co.uk



Revive NX UK



revivenx_uk



revivenx_uk