



ONE PLANET
A E S T H E T I C S

 0800 772 0402

 www.oneplanetaesthetics.co.uk

 info@oneplanetaesthetics.co.uk

  @oneplanetaesthetics



St Clare House, Ninth Floor, Greyfriars,
Princes Street, Ipswich, Suffolk, IP1 1LP

LipoLas®

FIBRE LASER LIFT TECHNOLOGY

Minimally invasive laser device for skin tightening and body contouring.

- EFFECTIVE FAT REDUCTION
- SIGNIFICANT TISSUE TIGHTENING
- PRECISE FIBRE GUIDANCE



HOW LIPO LAS® WORKS

LipoLas® Laser Lift is a minimally invasive procedure for skin tightening and fat reduction without scarring. The procedure can be performed on an outpatient basis under local anesthesia, e.g. TLA, or in combination with liposuction.

LipoLas® is optionally equipped with 2 wavelengths 1470nm and 980nm, which have a high absorption in water, fat and hemoglobin. The complementary and simultaneous use of both wavelengths enables optimum reduction of excess fatty tissue and excellent tightening with maximum protection of the surrounding tissue.



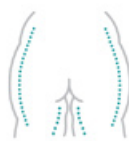
LipoLas®

- Minimally invasive procedure without scarring
- Effective skin tightening with long-term effect
- Removal of excess fat from small areas of skin
- Definition of face and body areas
- Can be used on almost all skin areas

LIPOLAS® APPLICATIONS



CHIN



BOTTOM



BELLY



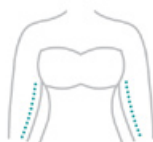
FACE



EYE



KNEE



UPPER ARMS



THIGHS



NECK

LipoLas[®] MINI

YOUR **VERSATILE** **DEVICE** FOR PORTABLE LASER APPLICATIONS

The success of LipoLas Dual laser was the motivation to introduce LipoLas MINI. The proven reliability of our diode laser systems inspired the introduction of a versatile and small platform for a wide range of in-office applications.



ADVANCED FIBEROPTICS

The LipoLas[®] MINI is designed to work in perfect combination with a broad spectrum of special medical fibers and application kits developed by biolitec[®] and its companies. biolitec[®] is one of the world's most technologically advanced suppliers of fiberoptic products.

- SIMPLE BUT VERSATILE
- BROAD SPECTRUM OF APPLICATIONS
- LOW MAINTENANCE AND RELIABLE
- MULTIDISCIPLINARY / SMALL FOOTPRINT
- USER-FRIENDLY / HANDY & MOBILE
- CLEAR AND INTUITIVE USER INTERFACE
- FAST SET-UP / FLEXIBILITY
- OPTIONAL BATTERY-POWERED

PLUS® PLEXR

PLEXR® PLASMA TECHNOLOGY

PLEXR® generates plasma by ionizing Nitrogen. Each plasma touch causes skin sublimation and collagen fibers tightening during the treatment. PLEXR® technology is globally recognized for Soft Surgery, which offers a safe and effective alternative to invasive cosmetic procedures.





PLEXR^{PLUS}®

OPTIMISED OUTPUT

With three multi-functional handpieces, whose outputs are optimised so that an ad-hoc signal can be delivered depending on the specific treatment, PLEXR® Plus ionizes the air present between its terminal and the epidermis, generating a radius of micro-plasma.

MULTIPLE APPLICATIONS

WHITE HANDPIECE: Blepharoplasty, lentigo solaris, moderate active acne, small wrinkles, umbilical lifting, small benign skin neoforations, coadjuvant for small keloids, moderate cutaneous renewal and skin rejuvenation, vaginal rejuvenation and vulvoplasty.

GREEN HANDPIECE: Active acne, medium benign skin neoforations, seborrheic keratosis, elastosis, dyschromia, small ruby angiomas, face lifting, xantelasmas, small fibromas, small scars.

RED HANDPIECE: Voluminous benign skin neoforations, big fibromas coadjuvant for keloids, big ruby angiomas, deep scars, acne scars, resurfacing, warts, seborrheic warts, hyperkeratosis, gingival whitening.

ALLUXDUAL

THE NEXT GENERATION
IN **DUAL-WAVELENGTH**
LASER TECHNOLOGY

Ami

AESTHETIC
MEDICAL
INNOVATION



ALLUXDUAL APPLICATIONS

LASER HAIR REMOVAL
PIGMENTED LESION REMOVAL
VASCULAR LESION REMOVAL
SKIN REJUVENATION



ONE PLANET
AESTHETICS

www.oneplanetaesthetics.co.uk
info@oneplanetaesthetics.co.uk
CALL: 0800 772 0402

LaEvita

LaEvita is the new virtually pain-free solution to the treatment of vaginal atrophy and mild stress urinary incontinence. Unlike other CO2-lasers, this is a NON-ablative and NON-destructive tissue technique that is virtually painless and well tolerated by patients.

Reclaim a sense of well-being in your body.

Every individual deserves well-being. With the soothing LaEvita laser treatment you can feel comfortable in your body again. Designed specifically for women at various life stages - whether after pregnancy, due to hormonal changes or during menopause - LaEvita supports the long-term improvement of both intimate well-being and overall quality of life.

ENHANCING THE PELVIC FLOOR



Enhances and sustains tissue to alleviate mild incontinence.

ELASTICITY AND HYDRATION



Enhances the natural hydration of vaginal tissue.

SUPPORT FOR INTIMATE WELL-BEING.



Enhances well-being and self-assurance in the intimate sphere.

NEOXEL

CO2 LASER TECHNOLOGY

NEOXEL CO2 fractional laser offers 'gold standard' skin resurfacing and rejuvenation. The Laser is delivered with a wavelength of 10,600nm in an array of Laser beams scanned across the skin, creating 100 micrometer columns in the skin.

NEOXEL delivers micro injury and heat to the skin to stimulate neocollagenesis and resurfacing the outer layer of skin. The fractional Laser leaves most of the skin intact, minimising downtime.

MULTI-APPLICATION CO2 LASER SYSTEM
NEOXEL CO2 fractional Laser treatment dramatically improves the tone and texture of the skin, smoothing out fine lines, deep wrinkles and reducing photodamage and scarring.



Surgical Mode HandPiece



50mm Hand Piece



100mm Hand Piece

Option HandPiece



E.N.T Hand Piece



Dental Hand Piece

SOLRAY

MULTI-APPLICATION IPL TECHNOLOGY

Solray is our new Intense Pulse Light device with innovative Photorejuvenation & Hair removal applications and comes in a compact design. Solray represents the latest version for skin care equipment, which is built with the innovative technology and design in mind. Solray offers safe and easy operation for all users.

Solray is suitable for treatment procedures for pigmented lesions, vascular lesions, acne and hair removal using basic wavelengths of 415nm, 560nm and 640nm.





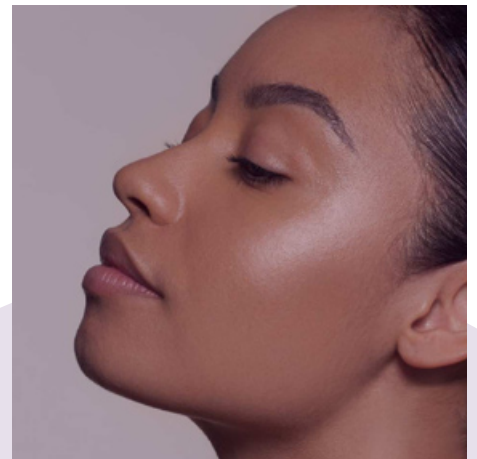
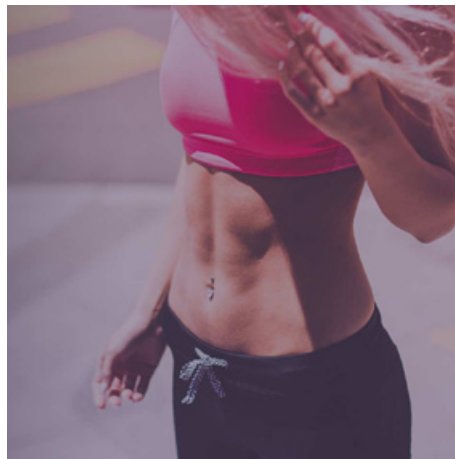
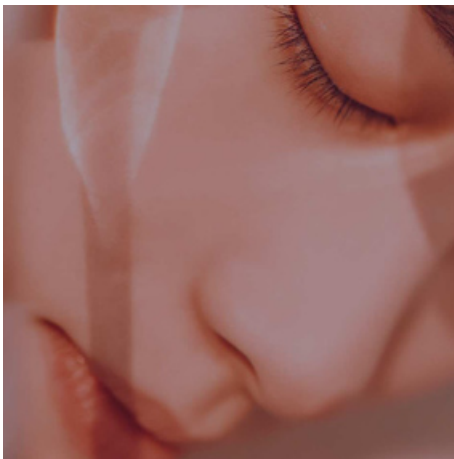
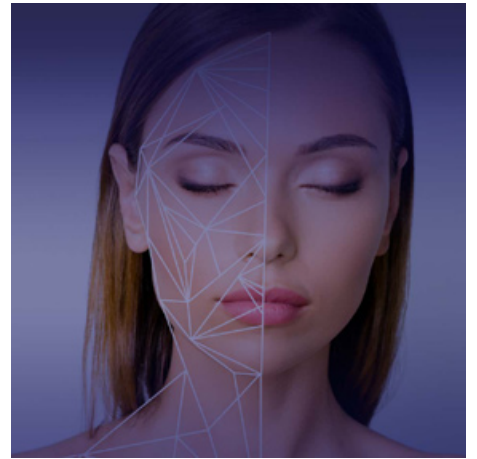
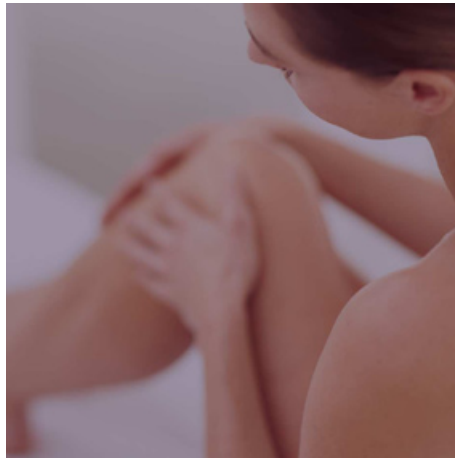
BUSINESS & MARKETING SUPPORT

Whether you are an established clinic, upgrading your laser equipment, or starting up a new cosmetic practice, One Planet Aesthetics provide comprehensive training & support for all our systems.

- DEVICE DELIVERY, INSTALLATION & CALIBRATION
- DEVICE WARRANTY / UNLIMITED ONGOING SUPPORT
- SERVICE SUPPORT FROM OUR HIGHLY TRAINED & EXPERIENCED ENGINEERS
- YOUR OWN DEDICATED BUSINESS DEVELOPMENT MANAGER
- ACCESS TO PROFESSIONAL DIGITAL GRAPHICS
- PROFESSIONAL, PERSONALISED LEAFLETS, ROLLER BANNER & POSTERS
- OPTIMISED WEBSITE / LANDING PAGE
- PRICING GUIDANCE / BUSINESS SUPPORT / CONSULTING



ONE PLANET
A E S T H E T I C S



☎ 0800 772 0402

🌐 www.oneplanetaesthetics.co.uk

✉ info@oneplanetaesthetics.co.uk

📷 @oneplanetaesthetics